

ORACLE®



Data Aggregation & Analytic Intelligence

Business 101 for Healthcare Organizations Now, Next Year and in Five Years

Lesli Adams, MPA

Director, Population Health Strategy

Oracle Health Sciences Global Business Unit

May 3, 2017

Martin Sizemore

AVP, Chief Data Officer

Wake Forest Baptist Health

ORACLE®

 **Wake Forest®**
Baptist Health

Safe Harbor Statement

The following is intended to outline our general product direction. It is intended for information purposes only, and may not be incorporated into any contract. It is not a commitment to deliver any material, code, or functionality, and should not be relied upon in making purchasing decisions. The development, release, and timing of any features or functionality described for Oracle's products remains at the sole discretion of Oracle.

Our Speakers



Lesli Adams, MPA is a Director of Population Health Strategy with a background of driving healthcare technology strategies for Oracle, Tenet Healthcare and the University of Texas MD Anderson Cancer Center. Expertise in population health analytics, predictive risk modeling, partner / channel relationships and enterprise data models. Experience with academic, for profit, integrated delivery networks, government, payers and military healthcare systems. Prolific in creating healthcare technology solution opportunities. Distinguished service in the US Navy.

Lesli Adams, MPA
Oracle Health Sciences Global
Business Unit
Director, Population Health Strategy



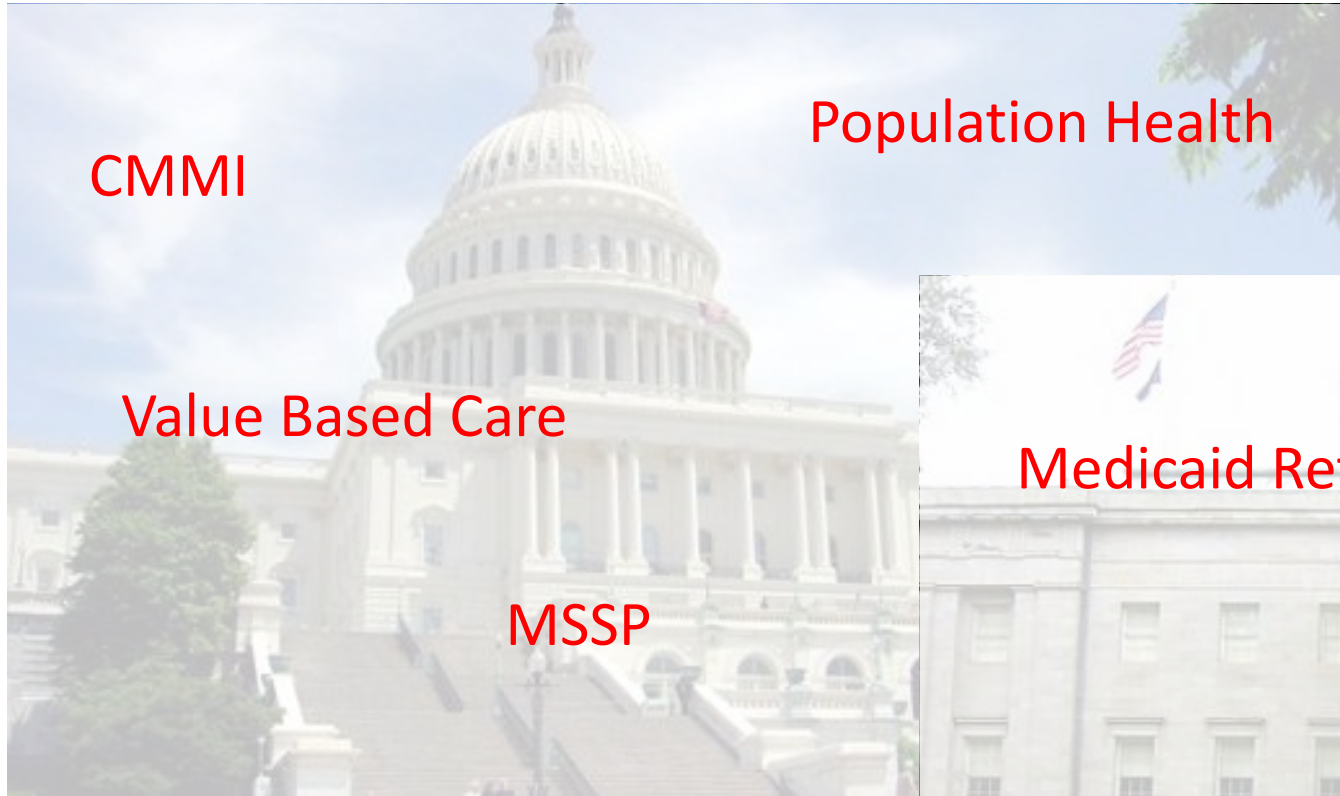
Martin Sizemore is the Chief Data Officer (CDO) at Wake Forest Baptist Medical Center in Winston-Salem, NC. The Chief Data Officer (CDO) is the visionary executive responsible for providing technical and strategic leadership for the enterprise Business Intelligence and Data Management program.

Martin Sizemore
AVP, Chief Data Officer
Wake Forest Baptist Health

Agenda

- 1 Analytic Strategy and Industry Pressures
- 2 Chief Data Officer's View
- 3 Value Based Care & Contracting (Costing)
- 4 Quality Measurement & Reporting
- 5 Agnostic Data Aggregation & Analytic Adoption

Industry Activities



CMMI

Population Health

Value Based Care

MSSP

Fee for Value
Certificate of Need

Accountable Care Organization

M&A

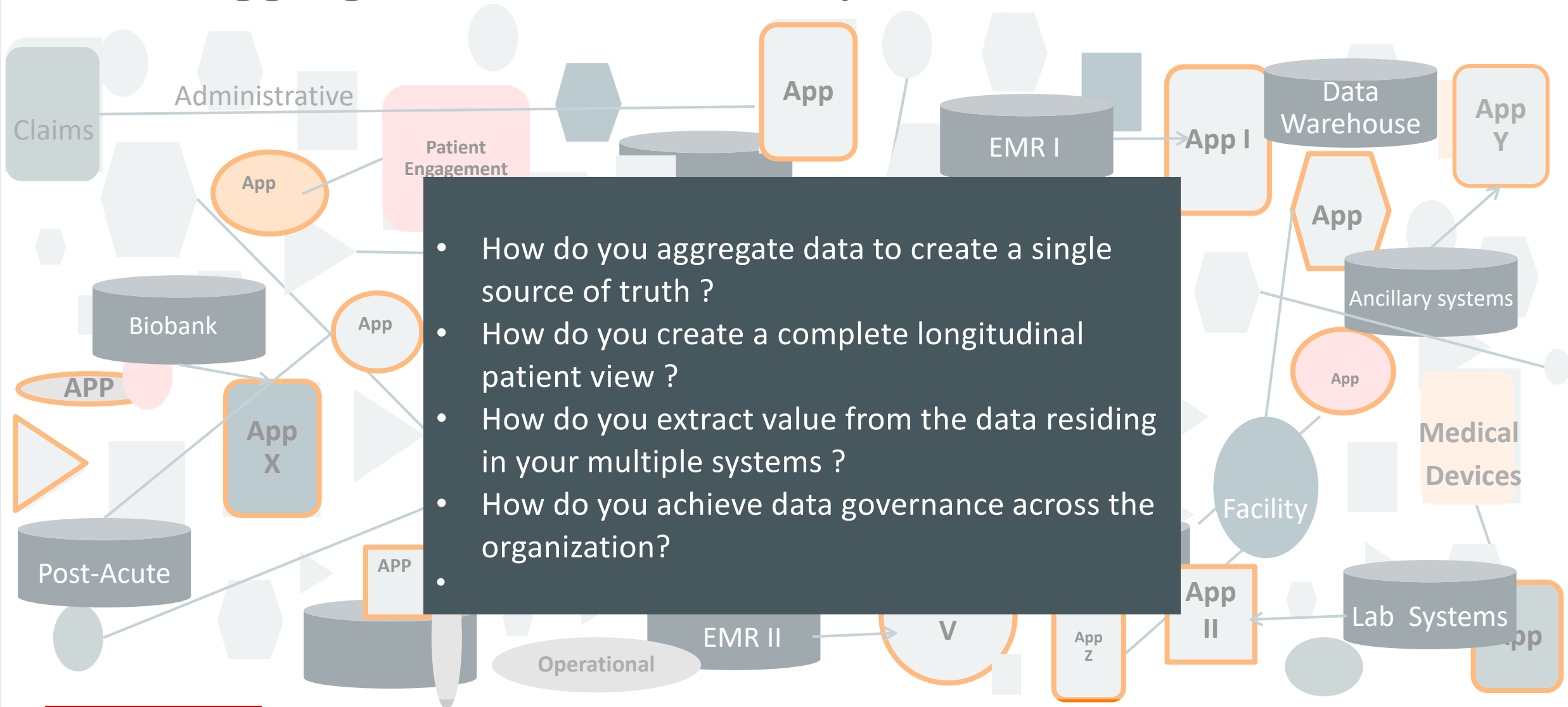


Medicaid Reform

Care Management

Clinical Integration

Data Aggregation – “the old way”



The role of a Chief Data Officer



- Provide **executive strategic leadership and technical leadership** to the **enterprise** Business Intelligence and Data Management program across the enterprise (on-premise and in the cloud).
- Develop and execute an **enterprise data governance program** ensuring best practice processes. Key deliverables will include architecture and ongoing management of master data management, semantic interoperability, and meta data.
- Ensure that the enterprise is using **business intelligence best practices** end-to-end supported by effective and efficient tools including data pipelines, algorithms, analysis, and visualization.
- **Architect** effective data warehouses, data marts, and operational data stores designed to empower users to do their own data consumption.
- Help build a **culture of data led decision-making**. Collaborate across cross-functional leaders to solve business process problems with data solutions. The role requires a **blend of technical capabilities and business acumen**.
- Architect interfaces to connect data internally and externally to solve business needs. It will be key to **build connectivity** with government entities, external health systems, clinically integrated networks, and payers. The CDO will provide enterprise level representation for data integration.

The role of a Chief Data Officer

- Ability to simplify data consumption processes to **allow non-technical users access to needed information.**
- Must **bring practicality** to the enterprise. Lead the enterprise in deploying the right tool for the job at the least cost which means helping people know when to use transactional reports, analytical reports, dashboards, datamarts, Excel extracts, etc.
- Provide **servant leadership** to the enterprise. Must be able to motivate and inspire the Business Intelligence team to become the sought after industry leader in Healthcare Business Intelligence.
- Architect solution to **integrate our clinical and research operations.** Build de-identified solutions to integrate with clinical trials using I2B2. Knowledge and experience with PICORI is beneficial.
- Architect tiered reporting solutions that leverages the benefits of the next generation hardware in the market including: cloud solutions, tiered storage, massive parallel processing, and **Data Lakes** to process unstructured data.

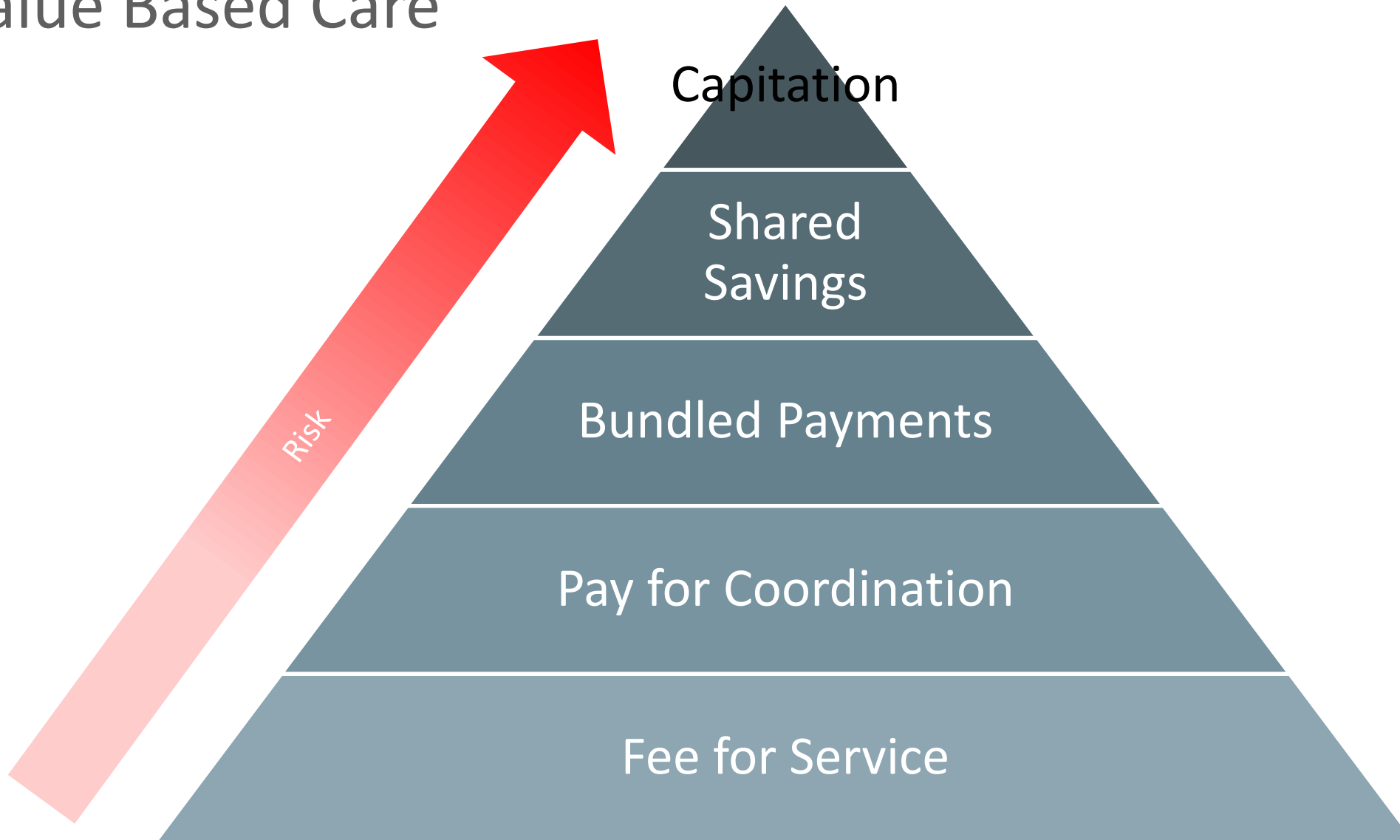


My Vision: Our Mission

Data Intelligence is a broad term that describes the real, meaningful insights that can be extracted from your data – truths that you can act on. The goal of any project, interface or other work by this team should always be to get the data intelligence out of the data.



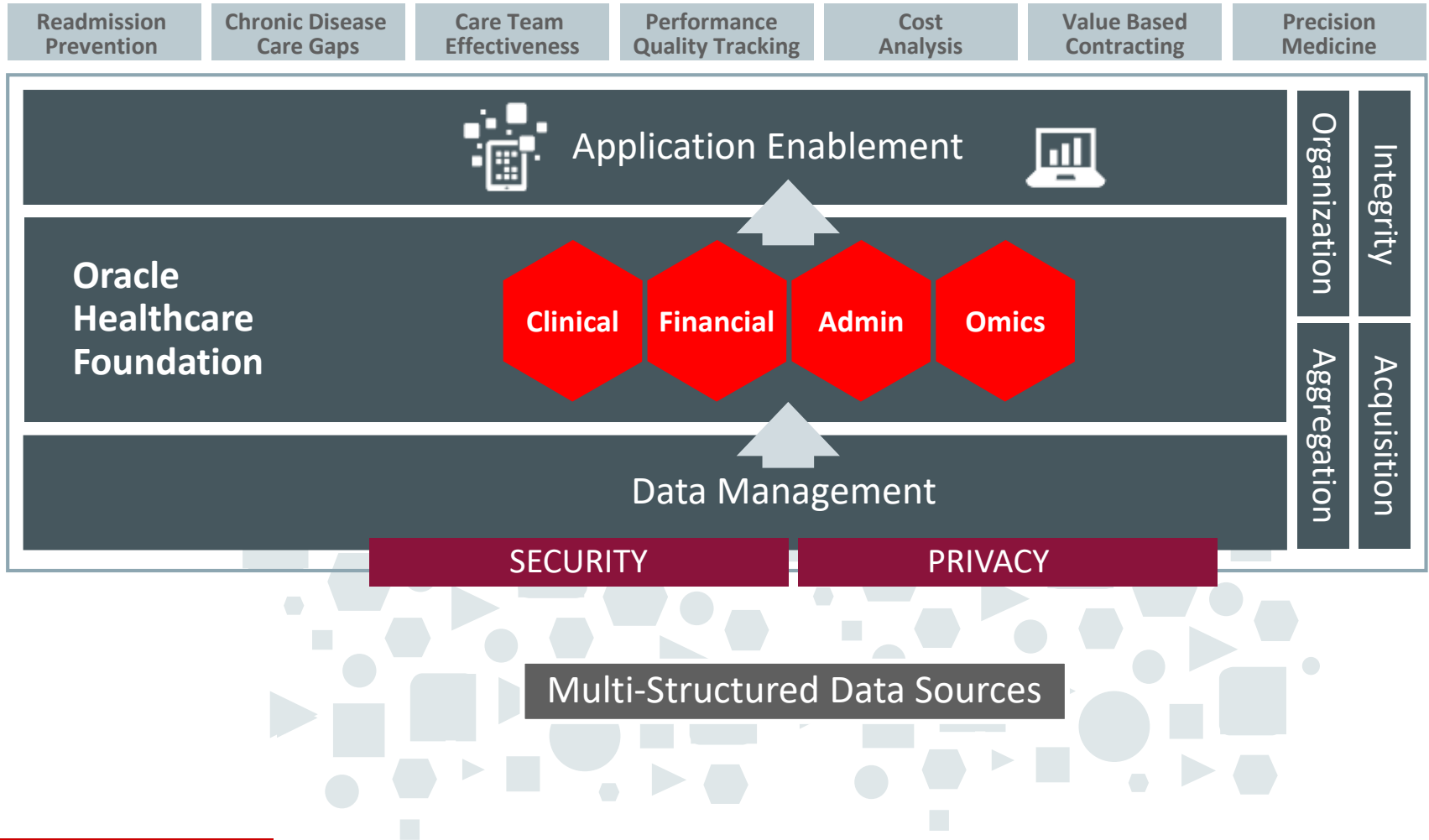
Value Based Care



Diversity of Quality Measures

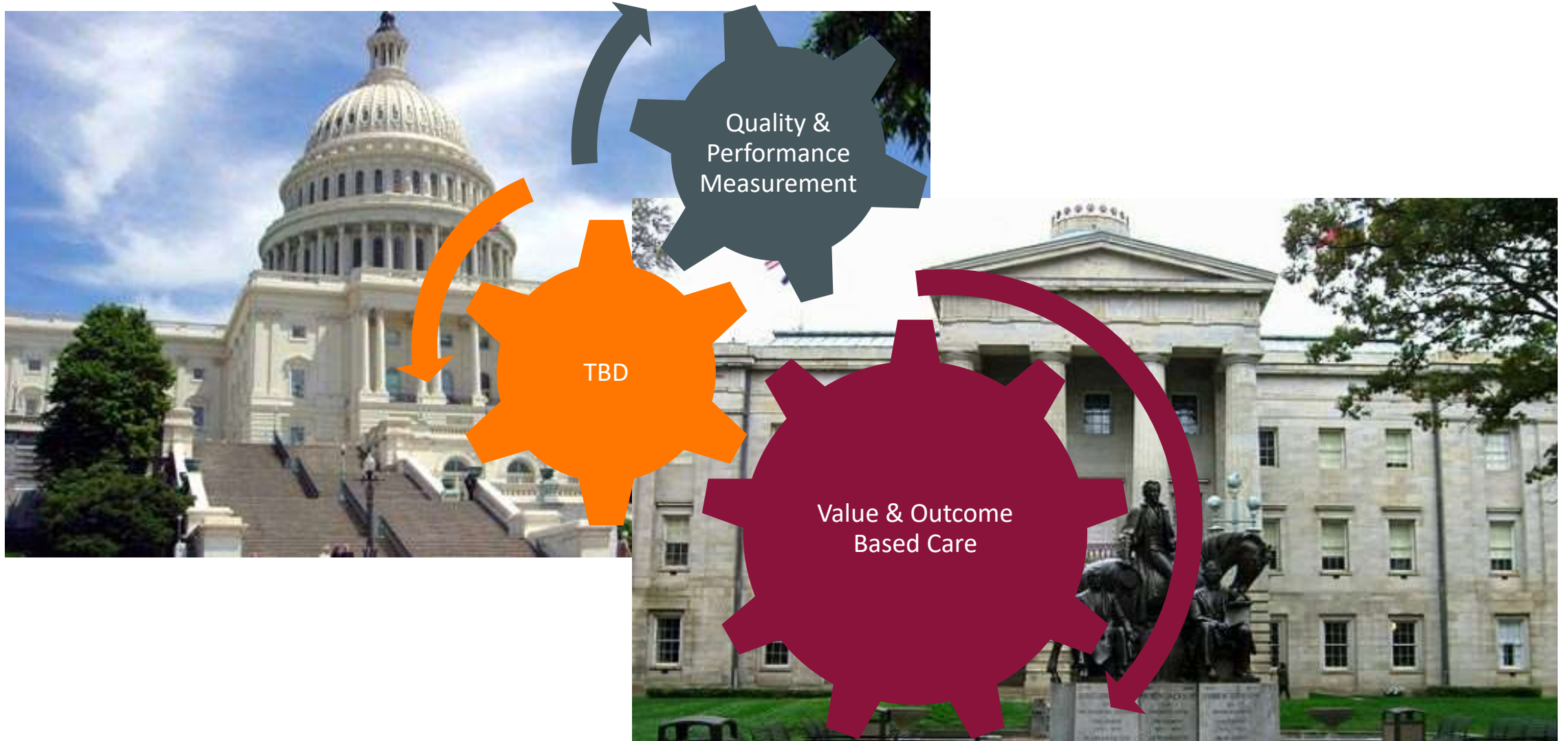
- ✓ MACRA
- ✓ MIPS
- ✓ HEDIS
- ✓ PSI
- ✓ PQRS
- ✓ MU
- ✓ ACO33
- ✓ HCAHPS
- ✓ Leapfrog
- ✓ Leapfrog
- ✓ Vizient
- ✓ Premier
- ✓ NSQIP
- ✓ QIO
- ✓ NDNQI
- ✓ MEDPAR
- ✓ Internal operating performance

Agnostic Data Aggregation & Analytic Adoption



- **Complete**
- **Modular**
- **Unified**
- **Flexible**
- **Extensible**
- **Enterprise class Platform**
- **Functionality with other Oracle solutions**

Meet Needs Today... and the Unknown in 5 years





ORACLE®